



# LENSES FOR JAI CAMERAS

BRING FOCUS TO YOUR VISION SYSTEM  
WITH JAI'S LENS COLLECTION



# Lenses for JAI Cameras

JAI provides a collection of lenses pre-qualified for use with various JAI area scan cameras. The collection is divided into three separate series tailored to the sensor formats, pixel sizes, and other camera specifications critical to maximizing optical performance for specific JAI camera models as shown in the table below.



Camera models	Compact C-mount lens series	High resolution lens series	Prism-optimized lens series
<b>Go-X Series</b>			
GOX-2402	● Page 3		
GOX-3200	● Page 4		
GOX-3201	● Page 4		
GOX-5102	● Page 4		
GOX-5103	● Page 4		
GOX-8901	● Page 5		
GOX-12401	● Page 5		
<b>Go Series</b>			
GO-2400	● Page 5		
GO-2401	● Page 5		
GO-5000	● Page 5		
GO-5100	● Page 4		
GO-5101	● Page 4		
<b>Spark Series</b>			
SP-5000	● Page 5	● Page 6	
SP-12400	● Page 5	● Page 6	
SP-12401	● Page 5	● Page 6	
SP-25000		● Page 6	
<b>Apex Series</b>			
AP-3200T			● Page 7
AP-1600T			● Page 7
<b>Apex Life Sciences</b>			
AP-3200T-LS			● Page 7
AP-1600T-LS			● Page 7
AP-3200T-LSX			● Page 7
AP-1600T-LSX			● Page 7
<b>Fusion Series</b>			
FS-3200T			● Page 7
FS-1600T			● Page 7
<b>Fusion Flex-Eye</b>			
FSFE-3200T			● Page 7
FSFE-1600T			● Page 7

# Compact C-mount lens series

JAI's compact C-mount lenses are designed to deliver an exceptional combination of performance and price when combined with the state-of-the-art sensors found in JAI's Go-X Series of compact machine vision cameras.

The selection of over 60 lenses includes fixed-focal lengths from 4 mm to 75 mm depending on the sensor format, with C-mounts and locking screws on focus and iris settings to ensure reliable operation in typical factory environments.

The lenses are also suitable for Go Series and Spark Series cameras with up to 12-megapixel resolutions.



## Group 1

Recommended for:



GOX-2402  
(Go-X Series)

Lens Model	Lens Mount	Focal Length	Image Format	Aperture
JCH-C118-0420C	C-mount	4 mm	1/1.8" (ø 9 mm)	F2 ~ F11/C
H0514-MP2	C-mount	5 mm	1/2" (ø 8 mm)	F1.4 ~ F16/C
JCH-C118-0620C	C-mount	6 mm	1/1.8" (ø 9 mm)	F2 ~ F11/C
JCH-C118-0820C	C-mount	8 mm	1/1.8" (ø 9 mm)	F2 ~ F11/C
M0814-MP2	C-mount	8 mm	2/3" (ø 11 mm)	F1.4 ~ F16/C
JCH-C118-1220C	C-mount	12 mm	1/1.8" (ø 9 mm)	F2 ~ F11/C
M1214-MP2	C-mount	12 mm	2/3" (ø 11 mm)	F1.4 ~ F16/C
JCH-C118-1620C	C-mount	16 mm	1/1.8" (ø 9 mm)	F2 ~ F11/C
M1614-MP2	C-mount	16 mm	2/3" (ø 11 mm)	F1.4 ~ F16/C
JCH-C118-2520C	C-mount	25 mm	1/1.8" (ø 9 mm)	F2 ~ F11/C
M2514-MP2	C-mount	25 mm	2/3" (ø 11 mm)	F1.4 ~ F16/C
JCH-C118-3520C	C-mount	35 mm	1/1.8" (ø 9 mm)	F2 ~ F11/C
M3514-MP	C-mount	35 mm	2/3" (ø 11 mm)	F1.4 ~ F16/C
M5018-MP2	C-mount	50 mm	2/3" (ø 11 mm)	F1.8 ~ F16/C
M7528-MP	C-mount	75 mm	2/3" (ø 11 mm)	F2.8 ~ F16/C

# Compact C-mount lens series - continued

## Group 2

Recommended for:



**GOX-3200**  
(Go-X Series)



**GOX-3201**  
(Go-X Series)

Lens Model	Lens Mount	Focal Length	Image Format	Aperture
JCH-C118-0420C	C-mount	4 mm	1/1.8" (ø 9 mm)	F2 ~ F11/C
M0528-MPW3	C-mount	5 mm	2/3" (ø 11 mm)	F2.8 ~ F16
JCH-C118-0620C	C-mount	6 mm	1/1.8" (ø 9 mm)	F2 ~ F11/C
M0828-MPW3	C-mount	8 mm	2/3" (ø 11 mm)	F2.8 ~ F16
JCH-C118-0820C	C-mount	8 mm	1/1.8" (ø 9 mm)	F2 ~ F11/C
M1228-MPW3	C-mount	12 mm	2/3" (ø 11 mm)	F2.8 ~ F16
JCH-C118-1220C	C-mount	12 mm	1/1.8" (ø 9 mm)	F2 ~ F11/C
M1628-MPW3	C-mount	16 mm	2/3" (ø 11 mm)	F2.8 ~ F16
JCH-C118-1620C	C-mount	16 mm	1/1.8" (ø 9 mm)	F2 ~ F11/C
M2528-MPW3	C-mount	25 mm	2/3" (ø 11 mm)	F2.8 ~ F16
JCH-C118-2520C	C-mount	25 mm	1/1.8" (ø 9 mm)	F2 ~ F11/C
M3528-MPW3	C-mount	35 mm	2/3" (ø 11 mm)	F2.8 ~ F16
JCH-C118-3520C	C-mount	35 mm	1/1.8" (ø 9 mm)	F2 ~ F11/C
M5028-MPW3	C-mount	50 mm	2/3" (ø 11 mm)	F2.8 ~ F16
M7528-MPW3	C-mount	75 mm	2/3" (ø 11 mm)	F2.8 ~ F16

## Group 3

Recommended for:



**GOX-5102**  
(Go-X Series)



**GOX-5103**  
(Go-X Series)



**GO-5100**  
(Go-Series)



**GO-5101**  
(Go-Series)

Lens Model	Lens Mount	Focal Length	Image Format	Aperture
M0528-MPW3	C-mount	5 mm	2/3" (ø 11 mm)	F2.8 ~ F16
JCH-C23-0828D	C-mount	8 mm	2/3" (ø 11 mm)	F2.8 ~ F16
M0828-MPW3	C-mount	8 mm	2/3" (ø 11 mm)	F2.8 ~ F16
JCH-C23-1228D	C-mount	12 mm	2/3" (ø 11 mm)	F2.8 ~ F16
M1228-MPW3	C-mount	12 mm	2/3" (ø 11 mm)	F2.8 ~ F16
JCH-C23-1628D	C-mount	16 mm	2/3" (ø 11 mm)	F2.8 ~ F16
M1628-MPW3	C-mount	16 mm	2/3" (ø 11 mm)	F2.8 ~ F16
JCH-C23-2528D	C-mount	25 mm	2/3" (ø 11 mm)	F2.8 ~ F16
M2528-MPW3	C-mount	25 mm	2/3" (ø 11 mm)	F2.8 ~ F16
JCH-C23-3528D	C-mount	35 mm	2/3" (ø 11 mm)	F2.8 ~ F16
M3528-MPW3	C-mount	35 mm	2/3" (ø 11 mm)	F2.8 ~ F16
JCH-C23-5028D	C-mount	50 mm	2/3" (ø 11 mm)	F2.8 ~ F16
M5028-MPW3	C-mount	50 mm	2/3" (ø 11 mm)	F2.8 ~ F16
M7528-MPW3	C-mount	75 mm	2/3" (ø 11 mm)	F2.8 ~ F16

# Compact C-mount lens series - continued

## Group 4

Recommended for:



GOX-8901  
(Go-X Series)



GO-2400  
(Go-Series)



GO-2401  
(Go-Series)



GO-5000  
(Go-Series)



SP-5000  
(Spark-Series)

Lens Model	Lens Mount	Focal Length	Image Format	Aperture
V0826-MPZ	C-mount	8 mm	1" (ø 16 mm)	F2.6 ~ F16
JCH-C1-1214A	C-mount	12 mm	1" (ø 16 mm)	F1.4 ~ F16
V1226-MPZ	C-mount	12 mm	1" (ø 16 mm)	F2.6 ~ F16
JCH-C1-1614A	C-mount	16 mm	1" (ø 16 mm)	F1.4 ~ F16
V1624-MPZ	C-mount	16 mm	1" (ø 16 mm)	F2.4 ~ F16
JCH-C1-2514A	C-mount	25 mm	1" (ø 16 mm)	F1.4 ~ F16
V2520-MPZ	C-mount	25 mm	1" (ø 16 mm)	F2 ~ F16
JCH-C1-3514A	C-mount	35 mm	1" (ø 16 mm)	F1.4 ~ F16
V3522-MPZ	C-mount	35 mm	1" (ø 16 mm)	F2.2 ~ F16
JCH-C1-5014A	C-mount	50 mm	1" (ø 16 mm)	F1.4 ~ F16
V5024-MPZ	C-mount	50 mm	1" (ø 16 mm)	F2.4 ~ F16
JCH-C1-7518A	C-mount	75 mm	1" (ø 16 mm)	F1.8 ~ F16
V7531-MPZ	C-mount	75 mm	1" (ø 16 mm)	F3.1 ~ F16

## Group 5

Recommended for:



GOX-12401  
(Go-X Series)



SP-12400  
(Spark Series)



SP-12401  
(Spark Series)

Lens Model	Lens Mount	Focal Length	Image Format	Aperture
JCH-C11-0618A	C-mount	6 mm	1.1" (ø 17.6 mm)	F1.8 ~ F16
JMO-C11-0817SR	C-mount	8 mm	1.1" (ø 17.6 mm)	F1.7 ~ F16
JCH-C11-0814A	C-mount	8 mm	1.1" (ø 17.6 mm)	F1.8 ~ F16
V0828-MPY2	C-mount	8 mm	1.1" (ø 17.6 mm)	F2.8 ~ F16
JMO-C11-1217SR	C-mount	12 mm	1.1" (ø 17.6 mm)	F1.7 ~ F16
JCH-C11-1228A	C-mount	12 mm	1.1" (ø 17.6 mm)	F2.8 ~ F22
V1228-MPY2	C-mount	12 mm	1.1" (ø 17.6 mm)	F2.8 ~ F16
JMO-C11-1615SR	C-mount	16 mm	1.1" (ø 17.6 mm)	F1.5 ~ F16
JCH-C11-1628A	C-mount	16 mm	1.1" (ø 17.6 mm)	F2.8 ~ F22
V1628-MPY2	C-mount	16 mm	1.1" (ø 17.6 mm)	F2.8 ~ F16
JMO-C11-2515SR	C-mount	25 mm	1.1" (ø 17.6 mm)	F1.5 ~ F16
JCH-C11-2528A	C-mount	25 mm	1.1" (ø 17.6 mm)	F2.8 ~ F22
V2528-MPY	C-mount	25 mm	1.1" (ø 17.6 mm)	F2.8 ~ F16
JMO-C11-3518SR	C-mount	35 mm	1.1" (ø 17.6 mm)	F1.8 ~ F16
JCH-C11-3528A	C-mount	35 mm	1.1" (ø 17.6 mm)	F2.8 ~ F22
V3528-MPY	C-mount	35 mm	1.1" (ø 17.6 mm)	F2.8 ~ F16
JMO-C11-5022SR	C-mount	50 mm	1.1" (ø 17.6 mm)	F2.2 ~ F16
JCH-C11-5028A	C-mount	50 mm	1.1" (ø 17.6 mm)	F2.8 ~ F22
V5028-MPY	C-mount	50 mm	1.1" (ø 17.6 mm)	F2.8 ~ F16



# High performance, high resolution lens series

High resolution cameras require high performance lenses capable of delivering sharp contrast even in applications requiring resolving power of 200 lp/mm and above.

JAI's selection of high performance, high resolution lenses ensures that you can leverage the small pixel sizes and high level of detail afforded by JAI's Spark Series 26-megapixel high resolution cameras while maintaining maximum image quality.

Can also be used with selected Spark Series 12-megapixel and 5-megapixel camera models.



Recommended for:



SP-5000  
(Spark Series)



SP-12400  
(Spark Series)



SP-12401  
(Spark Series)



SP-25000  
(Spark Series)

Lens Model	Lens Mount	Focal Length	Image Format	Aperture
JCH-C43-1228A	C-mount	12 mm	4/3" (ø 22 mm)	F2.8 ~ F22
JCH-C43-1628A	C-mount	16 mm	4/3" (ø 22 mm)	F2.8 ~ F22
JMO-C11-2518XR	C-mount	25 mm	1.2" (ø 19.3 mm)	F1.8 ~ F16
JCH-C43-2528A	C-mount	25 mm	4/3" (ø 22 mm)	F2.8 ~ F22
JMO-C11-3518XR	C-mount	35 mm	1.2" (ø 19.3 mm)	F1.8 ~ F16
JCH-C43-3528A	C-mount	35 mm	4/3" (ø 22 mm)	F2.8 ~ F22
JMO-C11-5020XR	C-mount	50 mm	1.2" (ø 19.3 mm)	F2 ~ F16
JCH-C43-5028A	C-mount	50 mm	4/3" (ø 22 mm)	F2.8 ~ F22
JMO-C11-9028XR	C-mount	90 mm	1.2" (ø 19.3 mm)	F2.8 ~ F16

# Prism-optimized lens series

JAI's prism-optimized lenses feature special designs to compensate for the different optical paths and focusing characteristics of a multi-waveband camera so that you can reap the full benefits of the prism technology.

Whether you need the precise color differentiation of JAI's Apex and Apex Medical and Life Sciences Series, or the multispectral capabilities of JAI's Fusion Series and Flex-Eye cameras, JAI's line of prism-optimized lenses deliver the sharp, high quality images you rely on from your prism-based camera.



## Optimized for:



**AT-3200T**  
(Apex Series)



**AT-1600T**  
(Apex Series)



**AT-3200T-LS**  
(Apex Life Sciences)



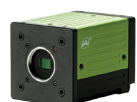
**AT-1600T-LS**  
(Apex Life Sciences)



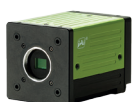
**AT-3200T-LSX**  
(Apex Life Sciences)



**AT-1600T-LSX**  
(Apex Life Sciences)



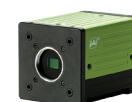
**FS-3200T**  
(Fusion Series)



**FS-1600T**  
(Fusion Series)



**FSFE-3200T**  
(Fusion Flex-Eye)



**FSFE-1600T**  
(Fusion Flex-Eye)

Lens Model	Lens Mount	Focal Length	Image Format	Aperture
JVS-C118-0628-C3	C-Mount	6 mm	1/1.8" (ø 9 mm)	F2.8 ~ F16/C
JMO-C118-0730-C3	C-Mount	7 mm	1/1.8" (ø 9 mm)	F3 ~ F16
JVS-C118-0824-C3	C-Mount	8 mm	1/1.8" (ø 9 mm)	F2.4 ~ F16/C
JMO-C118-0930-C3	C-Mount	9.3 mm	1/1.8" (ø 9 mm)	F3 ~ F16
JVS-C118-1218-C3	C-Mount	12 mm	1/1.8" (ø 9 mm)	F1.8 ~ F16/C
JMO-C118-1430-C3	C-Mount	14 mm	1/1.8" (ø 9 mm)	F3 ~ F16
JVS-C118-1618-C3	C-Mount	16 mm	1/1.8" (ø 9 mm)	F1.8 ~ F16/C



- **Use our free lens calculator to select the right focal length**

JAI provides a free lens selection calculator to help you find the right focal length for your application. This simple spreadsheet-based calculator lets you enter a few parameters like working distance, and FOV, and recommends the focal length you will need. Visit JAI website at [www.jai.com/products/lenses](http://www.jai.com/products/lenses) or contact your JAI sales representative for assistance.

- **Line scan lenses also available**

In addition to lenses for area scan cameras, JAI offers a selection of prism-optimized lenses for cameras in our Sweep+ Series of RGB and multispectral prism line scan cameras. Contact JAI for more information.

### EMEA

Denmark - JAI A/S  
E-mail: [camerasales.emea@jai.com](mailto:camerasales.emea@jai.com)  
Phone: +45 4457 8888

Germany - JAI A/S  
E-mail: [camerasales.emea@jai.com](mailto:camerasales.emea@jai.com)  
Phone: +45 4457 8888

### APAC

Japan - JAI Ltd.  
E-mail: [camerasales.apac@jai.com](mailto:camerasales.apac@jai.com)  
Phone: +81 45-440-0154

Singapore - JAI Asia SG Ltd.  
E-mail: [camerasales.apac@jai.com](mailto:camerasales.apac@jai.com)  
Phone: +65-9239-9592

China - JAI Technology (Beijing) Co., Ltd.  
E-mail: [camerasales.apac@jai.com](mailto:camerasales.apac@jai.com)  
Phone: +8610-8588-0278

Korea - JAI  
E-mail: [camerasales.apac@jai.com](mailto:camerasales.apac@jai.com)  
Phone +82 2 6138 3830

### AMERICAS

Unites States - JAI Inc.  
E-mail: [camerasales.americas@jai.com](mailto:camerasales.americas@jai.com)  
Phone (Toll-Free): 800 445 5444  
Phone + 1 408 383 0300

